

# Lenses for NEC PA Projector Series

NP44ML NP11FL NP30ZL NP12ZL NP13ZL NP14ZL NP40ZL NP41ZL NP43ZL

## Technical Specifications



Model	NP44ML	NP11FL	NP30ZL	NP12ZL	NP13ZL	NP14ZL	NP40ZL	NP41ZL	NP43ZL
Order Code	100015167	60003222	100013349	60003220	60003217	60003221	100014472	100014473	100014645
Motorised Lens	—	—	—	—	—	—	X	X	X
Projection ratio [WUXGA]	0.32	0.80	0.79 - 1.04	1.19 - 1.56	1.50 - 3.02	2.97 - 4.79	0.79 - 1.11	1.30 - 3.02	2.99 - 5.93
Aperture	2.0	2.3	1.9-2.1	2.2 - 2.69	1.7 - 2.37	2.2 - 2.64	2.0 - 2.5	1.7 - 2.0	2.2 - 2.6
Focal Range [mm]	6.27	13.2	13.2 - 17.2	19.4 - 25.3	24.4 - 48.6	48.5 - 77.6	13.3 - 18.6	21.8 - 49.8	49.7 - 99.8
Zoom Ratio	—	—	1.3	1.3	2.0	1.6	1.4	2.3	2.0
Screen size [inches]	100 - 400	40 - 150	X 52" - 500" W/U 50" - 500"	30 - 500	40 - 500	60 - 500	50 - 500	50 - 500	50 - 500
Projection distance [m]	0.09 - 2.28	0.7 - 2.6	0.8 - 11.1	0.7 - 16.5	1.2 - 31.9	3.7 - 50.9	0.8 - 12.0	1.4 - 32.6	3.3 - 63.9
Shift Area	0V/0H	0V/0H	+0.5V -0.1V / +/- 0.2H	+0.5V -0.1V / +/- 0.3H	+0.5V -0.1V / +/- 0.3H	+0.5V -0.1V / +/- 0.3H	+0.5V -0.1V / +/- 0.2H	+0.5V -0.1V / +/- 0.2H	+0.5V -0.1V / +/- 0.2H
Weight [kg]	3.2	approx 1.2	1.14	approx 1.2	0.84	approx 1.0	approx. 1.63	approx. 1.75	approx. 1.77
PA653UL/ PA803UL	X	—	—	—	—	—	X	X	X

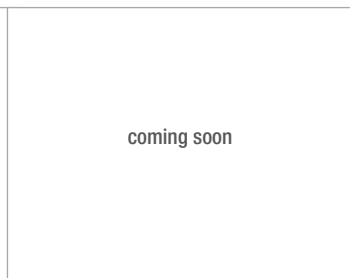
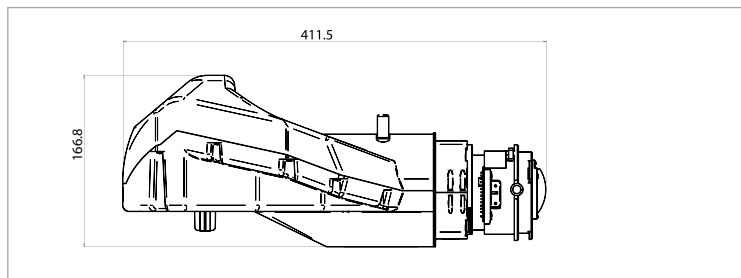
## Screen Size and Distance

Screen Size [inches]	NP44ML	NP11FL	NP30ZL	NP12ZL	NP13ZL	NP14ZL	NP40ZL	NP41ZL	NP43ZL
80"	—	1.4	1.4 - 1.7	2.0 - 2.6	2.5 - 5.1	5.0 - 8.0	1.4 - 1.9	2.2 - 5.2	5.1 - 10.3
100"	0.09	1.7	—	2.5 - 3.3	3.2 - 6.3	6.3 - 10.1	1.7 - 2.4	2.8 - 6.6	6.5 - 13.2
120"	0.236	2.1	2.1 - 2.6	3.0 - 3.9	3.8 - 7.6	7.5 - 12.1	2.1 - 1.9	3.4 - 7.9	7.8 - 15.5
150"	0.456	2.6	2.5 - 3.3	3.8 - 4.9	4.8 - 9.5	9.4 - 15.2	2.6 - 3.6	4.2 - 9.8	9.7 - 19.3
200"	0.821	—	3.4 - 4.4	5.1 - 6.6	6.4 - 12.7	12.6 - 20.3	3.4 - 4.7	5.6 - 12.9	12.9 - 25.7
240"	1.113	—	4.1 - 5.3	6.1 - 7.9	7.6 - 15.3	15.2 - 24.4	4.1 - 5.7	6.8 - 15.7	15.5 - 31.0
300"	1.552	—	5.1 - 6.6	7.6 - 9.9	9.6 - 19.1	19.0 - 30.5	5.1 - 7.1	8.4 - 19.5	19.3 - 38.3
400"	2.282	—	6.8 - 8.8	10.2 - 13.2	12.8 - 25.5	25.4 - 40.7	6.8 - 9.5	11.2 - 26.0	25.7 - 50.1
500"	—	—	8.5 - 11.1	12.7 - 16.5	16.0 - 31.9	31.8 - 50.9	8.5 - 12.0	14.0 - 32.6	32.2 - 63.9

## Technical Drawings

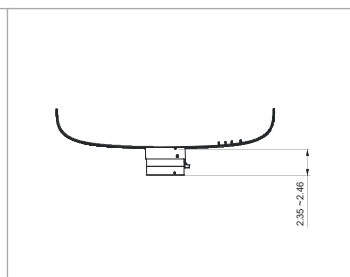
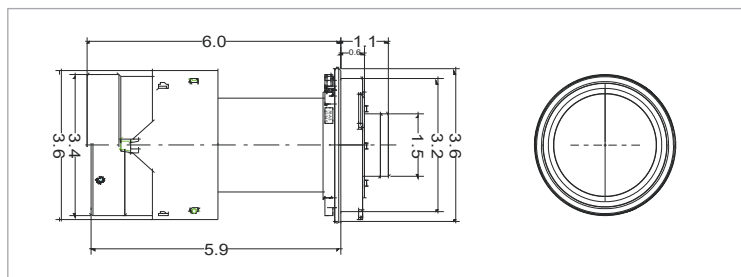
NP44ML

Order Code: 100015167



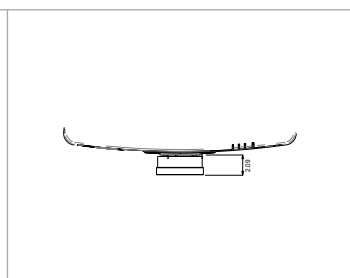
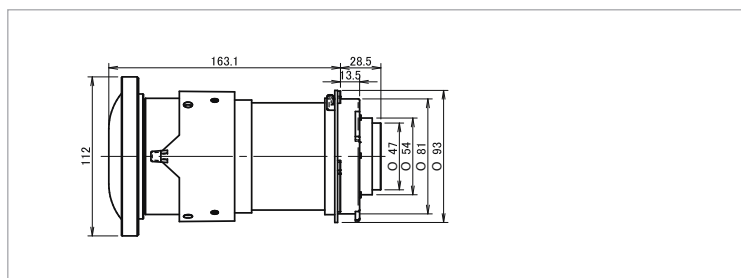
NP11FL

Order Code: 60003222



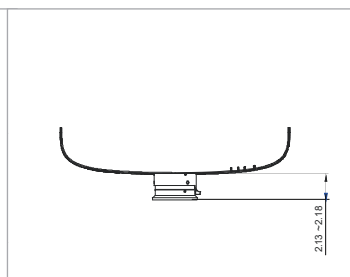
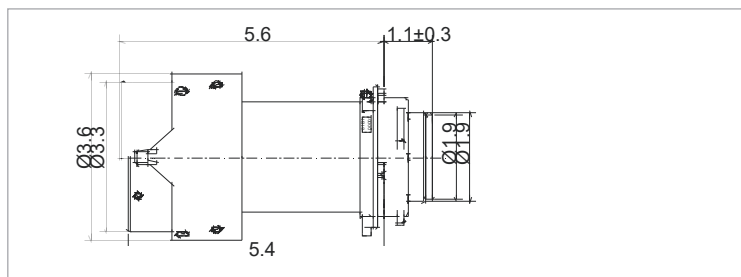
NP30ZL

Order Code: 100013349



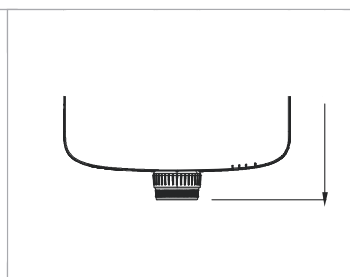
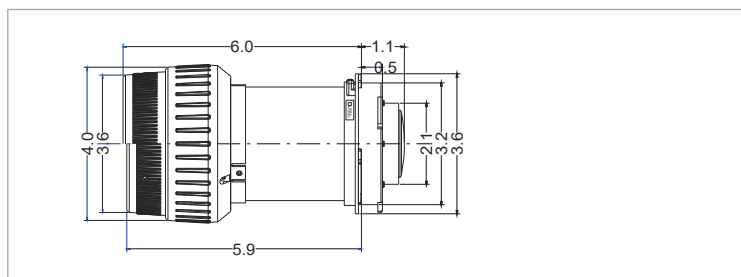
NP12ZL

Order Code: 60003220



NP13ZL

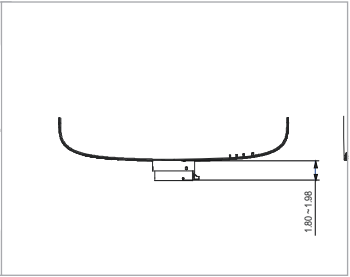
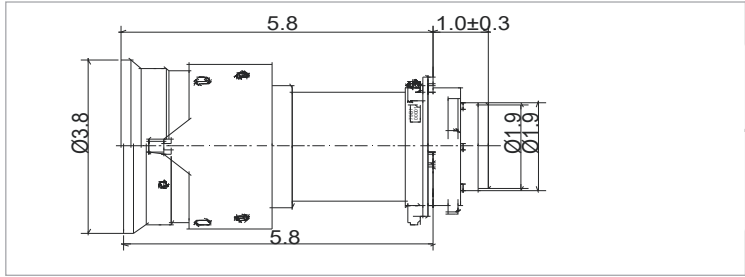
Order Code: 60003217



# Technical Drawings

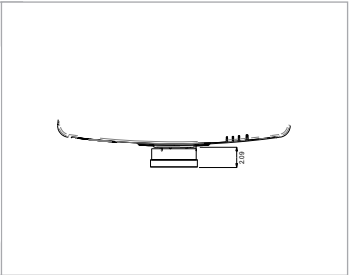
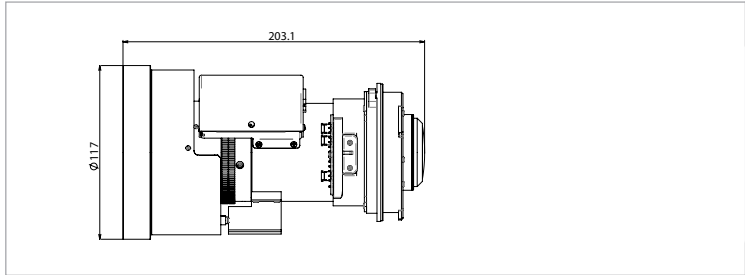
**NP14ZL**

Order Code: 60003221



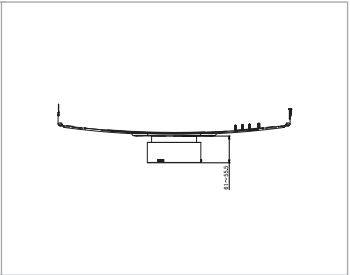
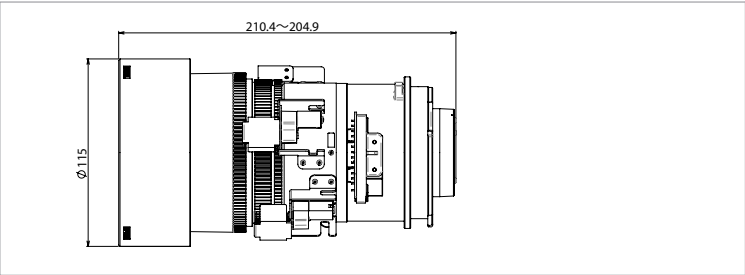
**NP40ZL**

Order Code: 100014472



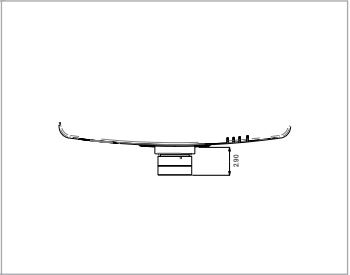
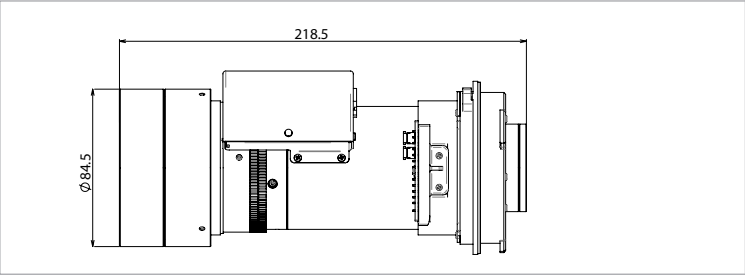
**NP41ZL**

Order Code: 100014473



**NP43ZL**

Order Code: 100014645



**NEC Display Solutions Europe GmbH**  
 Landshuter Allee 12-14, D-80637 München  
 infomail@nec-displays.com  
 Phone: +49 (0) 89 99 699-0  
 Fax: +49 (0) 89 99 699-500  
[www.nec-display-solutions.com](http://www.nec-display-solutions.com)